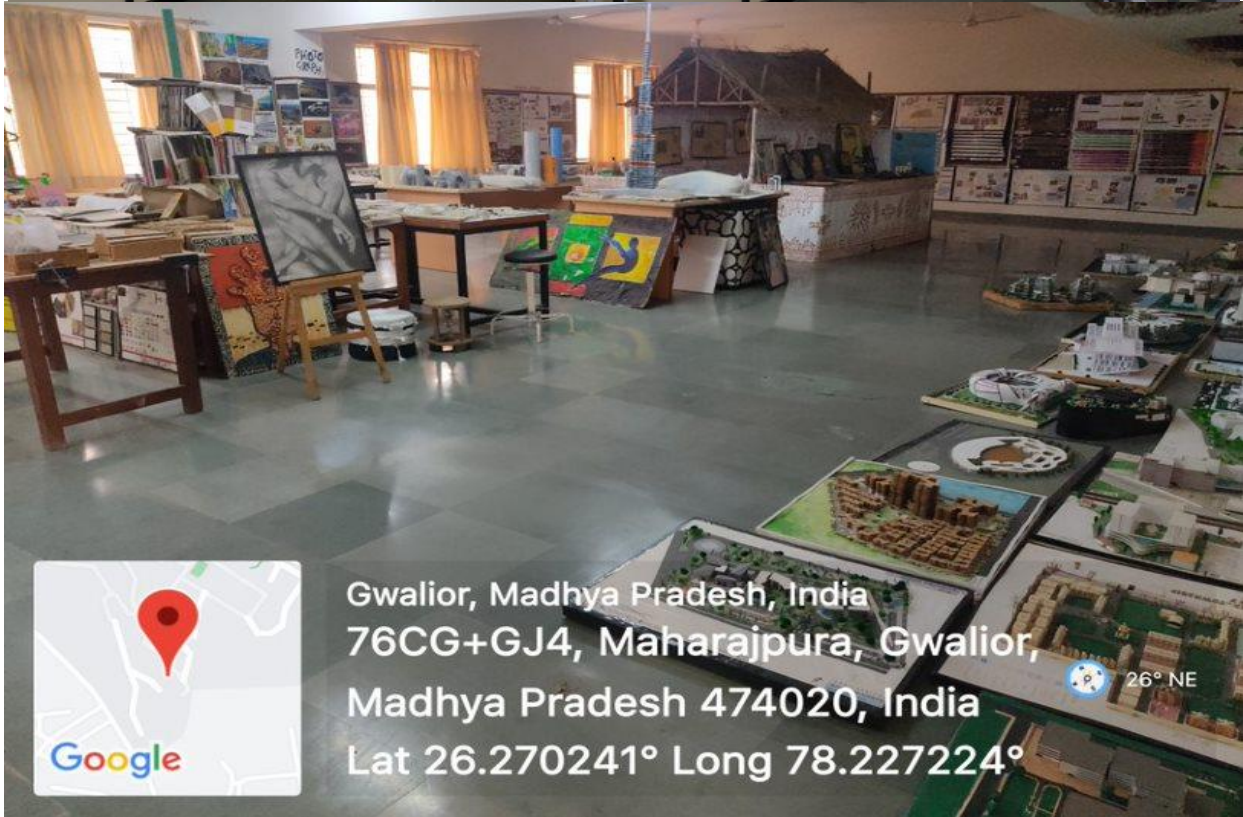


AMITY UNIVERSITY MADHYA PRADESH

Information of metric 3.1.5 of SSR with respect to Institutional facilities to support research:

Museum



Gwalior, Madhya Pradesh, India
76CG+GJ4, Maharajpura, Gwalior,
Madhya Pradesh 474020, India
Lat 26.270241° Long 78.227224°

(Establishment Year - 2017)

The University has two Museums in the University i.e. Material Museum and Specimen Museum

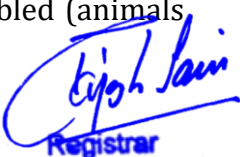
Material Museum consists of the variety of materials, used in the construction of buildings and infrastructure development. Along with the conventional building materials the state of art energy efficient and cost effective building materials, available in market, are also displayed in the material museum. The students study the characteristics and appropriate use of these materials. In order to update the students' knowledge on building materials along with energy efficiency, cost effective construction and building services like water supply and sanitation, plumbing, electrical and mechanical fittings and fixtures, insulation, acoustics, etc, samples of these variety of material are displayed in Museum.

These samples are facilitated with information in form of charts and brochures mentioning their specifications like thermal properties, costing etc.

The students are motivated to use the materials in innovative way by researching and developing the various materials to take their optimum advantage in energy efficiency and cost effective construction materials and technology.

Students get the motivation to research and develop new energy efficiency and cost effective construction materials and technology.

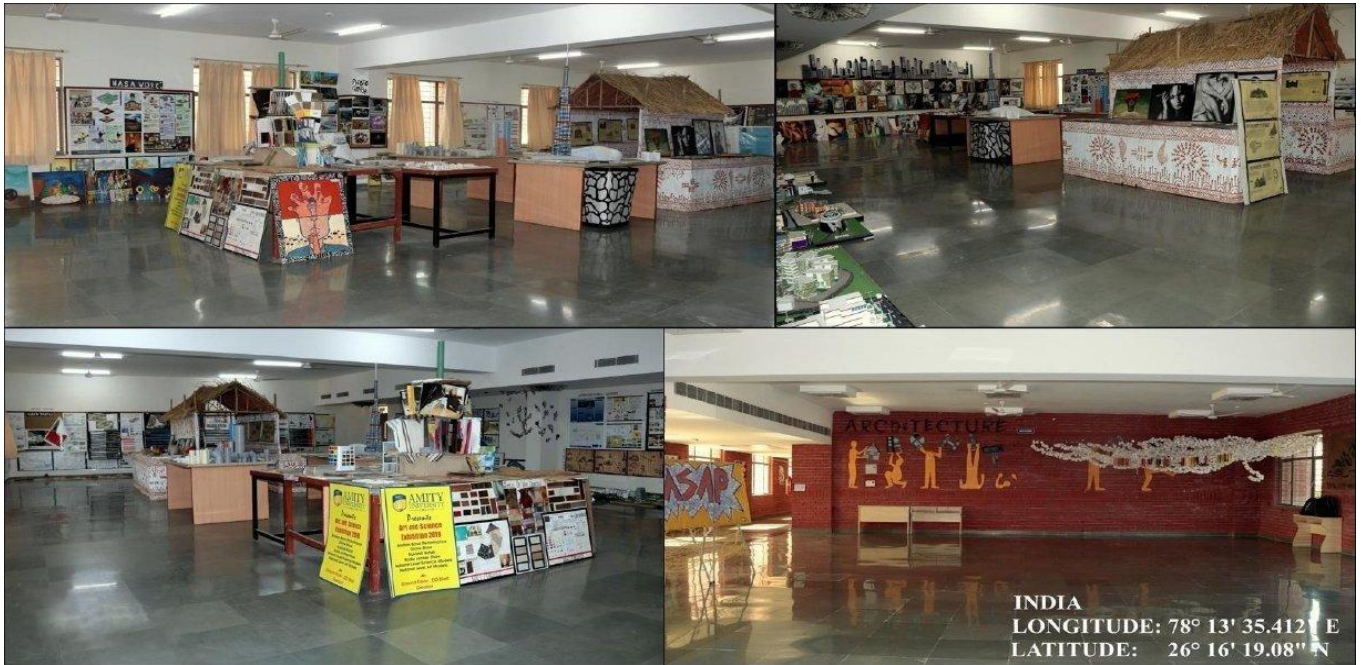
Museum specimen is an area where biological specimen (animal and plant) and their parts are preserved for teaching purpose. There are various uses of laboratory specimen viz. verification of the identity of a species, increment in student's knowledge in biological species etc. In Higher Educational Institutions, animal collections are assembled (animals


Registrar
Amity University Madhya Pradesh
Gwalior

in fixing fluids, dried or specially prepared animals, stuffed animals, skeletons, hides, and articles made from horns, bones, shells, etc.) and students can get knowledge and information of different groups of animals and plants. This improves their understanding of similarities and differences between kingdoms. Museum specimens are extremely diverse and serve to bridge the gap between how biological specimens are preserved for scientific collections and knowledge of students. Displayed collections are shown in exhibition room/hall, where animals are arranged systematically, sometimes according to zoogeographic principles. Anatomical, morphological and evolutionary expositions reflecting the practical significance of animals (economic use, hunting and trapping, acclimatization, breeding, and protection) are set up. Collections are mounted in glass cases (large items are sometimes displayed openly). Microscopically small items generally are not displayed; they are replaced by microphotographs, sketches, or enlarged models. Labels and explanatory texts contain information on the taxonomic status of the animal and its geographic distribution, distinctive biological features, and economic value. In Amity Institute of Biotechnology, Amity University, Madhya Pradesh has constructed "Museum Specimen Laboratory" for the graduates and undergraduate students in the year 2016, where biological specimens are preserved and stored/kept. Animal specimens are usually preserved in jars containing preservative solutions. Plants and animals are sometimes preserved as dry specimens. Insects are preserved in insect boxes after collecting, killing, and pinning. Large animals (e.g. birds and mammals) are stuffed and preserved in containers. Animal skeletons are also preserved. The main objective of the museum specimen is to introduce the characteristics and variations among different phylum of animal and plant kingdom. After visiting the museum, students understand the concepts about the characteristics and variations of the kingdom and it helps students to practice developing a conservative outlook for animals. The students must possess a fair understanding of generating written and verbal communication skills over the subject.


Registrar
Amity University Madhya Pradesh
Gwalior

Art Gallery

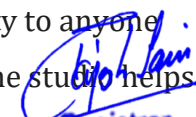


(Establishment Year - 2017)

The Art Gallery/Studio is a space to develop the aesthetics among the students and to showcase students' creativity. The art gallery / studio gives the students a platform to acquainted themselves with the state of art development in the field of Art, by seeing the displayed work of other artists and working hands on with other artists. In the creative environment of art gallery/studio, the application of new frameworks, new concepts and opportunities for the expression of new ideas and design are discussed.

In the art gallery / studio the students learn to use the new ideas and combination of various art forms which supports research and development in art and design. This amalgamation of various art forms may lead to innovative art forms and students get the motivation to create innovative ideas which can be formulated, developed and reviewed, leading to research. It explores the challenges of interdisciplinary research and highlights its importance and significance for the future research in the field of art and design and its relationship to science and technology.

In Art Gallery /Studio, the creative processes and ideas are devised and explored how technology and its applications can be effectively amalgamated for the development and research and advancement in the field of Art. It also explores the opportunity to anyone who is interested in the concept of collaboration and communication and the studio helps in this application to art and its creation.


Registrar
Amity University Madhya Pradesh
Gwalior

MOOT COURT



(Establishment Year - 2015)


"A lawyer has no business with the justice or injustice of the cause which he undertakes, unless his client asks his opinion, and then he is bound to give it honestly. The justice or injustice of the cause is to be decided by the Judge"

Law is a jealous mistress and a bramble bush. One who wants to pursue law as a career has to work hard . There are a few essential aspects of a Law School that every Law student

must understand. These include writing research papers, taking part in various conferences and competitions etc.. One of the most important aspects of pursuing law as a career option is mooting. Mooting is a representation of a court proceedings involving oral proceedings in addition to submission of Written arguments known as Memorial. Moot proposition of the case (Legal problem) is given to the participating students and participating students are allotted teams to argue for the Petitioner(s) or the Respondent(s). A proper scenario based on Court room is created for the students to have a real life experience. They are required to act like lawyers throughout the proceedings. The Judges of the Moot Court ask questions to the participating students to test their conceptual understanding of laws applicable to the the facts of the case. In short Moot Court is simulation of actual Court proceedings. Competitors gain valuable experience and training in written and oral advocacy as well as in Court craft.

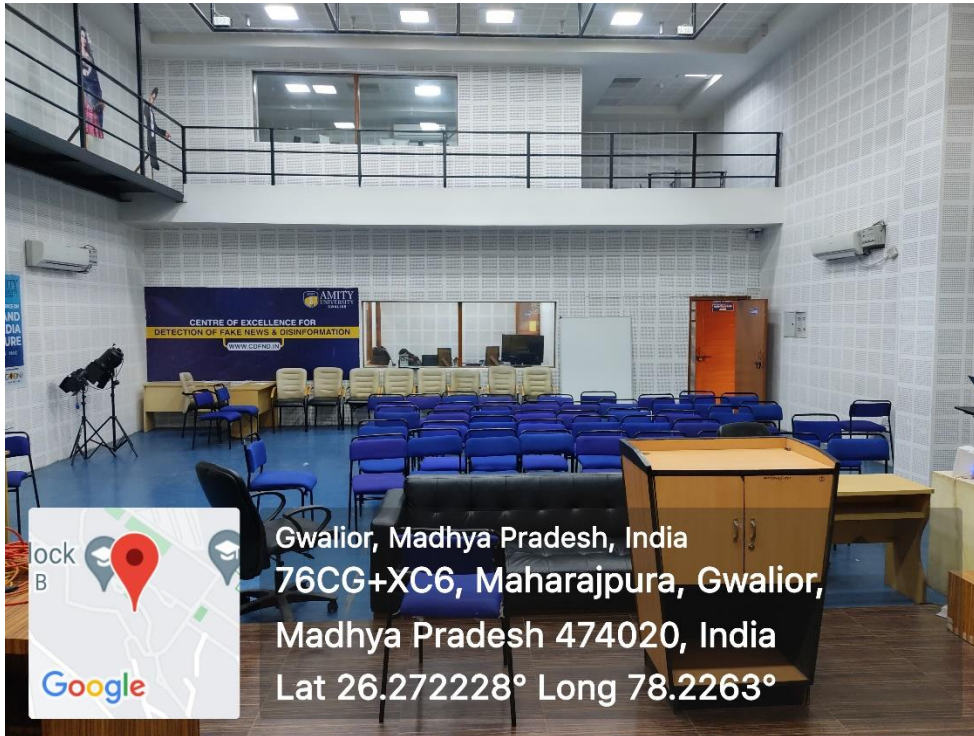
For a student, who is going to become a lawyer in the near future. Mooting is very important as an integral part of legal education because it will help students to learn the art of advocacy. In Amity Law School, AUMP, for Preliminary, Quarter and Semi Finals Competitions, we have been calling senior advocates of the High Court well versed as per the Moot Proposition to judge the proceedings and to judge the Final round , we have always invited the sitting judges of the Hon'ble High Court.

Amity Law school, AUMP has a model Moot Court equipped with all modern infrastructures, which has always been appreciated by all and sundry including Hon'ble Judges of the High Court of Madhya Pradesh , Gwalior bench and the distinguished visitors


Registrar
Amity University Madhya Pradesh
Gwalior

Studio and Editing Lab





(Establishment Year - 2013)

ASCO always believes in a hands-on approach. Students are made to do portfolio shoots, advertisement shoot, ground reporting on camera, MOJO, manage cameras record as well as anchor links. We regularly record panel discussions as well as chat shows involving students and faculties. We are also well adept at creating documentaries, short films, social awareness campaigns via visual media and music videos. We also have web radio i.e. www.amiradio.in, which is run by our students to get firsthand experience of the radio industry.

The Fake news war room

Amity School of Communication has established Centre for Detection of Fake News and Disinformation at Amity University Madhya Pradesh. This Centre remains updated concerning technology for Detection of Fake news/videos/audios/pictures on social media/print/ electronic media. The center teaches the students about technology associated with the subject. ASCO studio works as the war room for the center, and the students are trained in the studio for using the tools required in battling against fake news.

State of Art Studio

Our 'State of the Art Studio' is fully equipped with modern technologies and instruments to train students in Videography, Photography, Film Making, Scriptwriting, Newsroom Practices, and TV Shows.

The Multimedia Lab

The well-equipped computer labs at ASCO have computers with the latest configuration and all software required by students during their course. The software related to Designing, Editing, Mixing, VFX etc. It helps students to learn different aspects of Photo and Film editing. Web Technologies are used by students to implement whatever is taught to them in the classroom. Students can access software like 3DS max, Autodesk Maya, Photoshop, Illustrator. Computers in the lab provide internet access with the help of LAN.


Registrar
Amity University Madhya Pradesh
Gwalior

Research/Statistical Databases to support research

AUMP has a subscription to various online or offline research databases to enhance the quality of research work in various disciplines/institutes. To encourage sharing of resources among the libraries by developing a network of libraries, by gathering, storing and disseminating information, to coordinate with other regional, national and international networks and libraries for exchange of information and documents; AUMP has subscription to the DELNET and it is renewed every year. To encourage online legal research AUMP has subscribed for the Annual subscription online database module which is IP based Access by Manupatra. To provide access to the cases published by High court and the Supreme Court we have subscription for the various Journals like Supreme Court base 1950-2011, High court data base 1950-2011, Criminal Law Journal data base 1950-2011 etc. by AIR InfoTech services private limited. To have legal research tool which can offer best quality information with an interface which provides a researcher a faster and more effective method AUMP have access to SCC online web Edition.

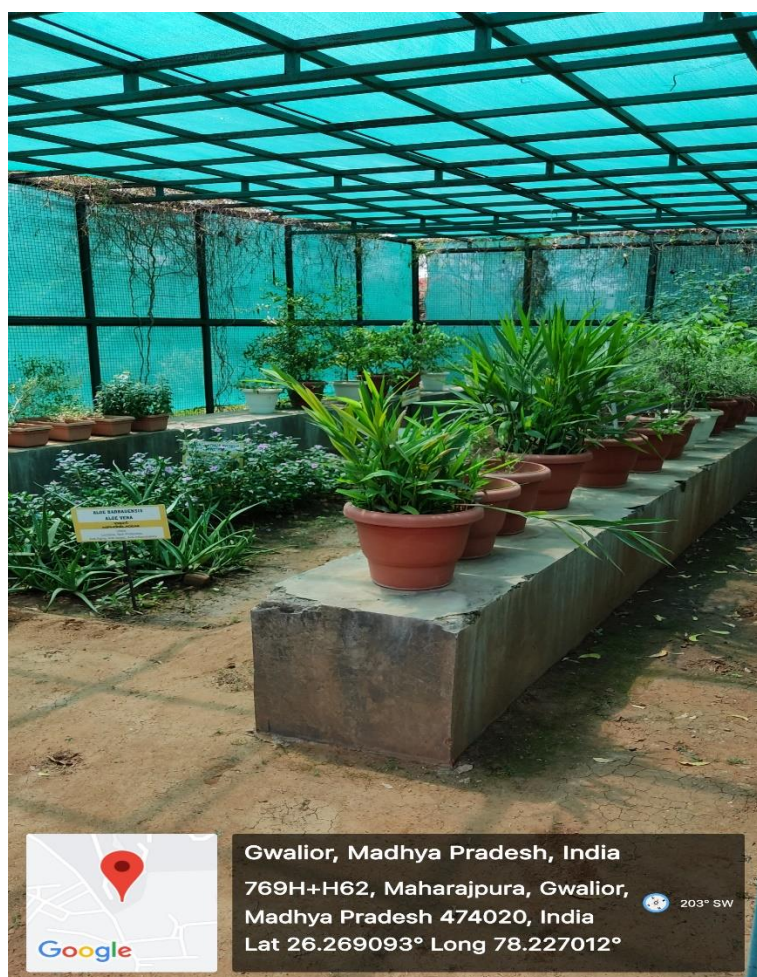
The details of various subscriptions along with their year of establishment are as follows:

1. AIR online Institutional version subscription
2017-2018
2. Manupatra Institutional version subscription
2017-2018
3. SCC online law subscription
2017-2018
4. Delnet Institutional version subscription
2017-2018
5. AIR online Institutional version subscription
2018-2019
6. Manupatra Institutional version subscription
2018-2019
7. SCC online law subscription
2018-2019

8. Delnet Institutional version subscription
2018-2019
9. AIR online Institutional version subscription
2019-2020
10. Manupatra Institutional version subscription
2019-2020
11. Delnet Institutional version subscription
2019-2020
12. AIR online Institutional version subscription
2020-2021
13. Manupatra Institutional version subscription
2020-2021
14. SCC online law subscription
2020-2021
15. Delnet Institutional version subscription
2020-2021
16. IEEE Electronic Library version subscription
2020-2021
17. AIR online Institutional version subscription
2021-2022
18. SCC online law subscription
2021-2022
19. Delnet Institutional version subscription
2021-2022
20. IEEE Electronic Library version subscription
2021-2022


Registrar
Amity University Madhya Pradesh
Gwalior

Medicinal Plant Garden



(Establishment Year – 2018)

Amity Institute of Pharmacy's Medicinal plant garden has a properly maintained, diverse, well documented and scientifically identified medicinally important live plants, which is the essential component of Pharmacy education. Medicinal plants and crude drugs

are the part of Pharmacy curriculum. The plants are well known in the traditional system of medicine which supports and enhances the quality of teaching and research for both faculty and students in drug discovery process. The plants are well displayed in a visually pleasing and appealing manner, labelled and organised, which promotes knowledge and interest on medicinal plants. The garden is a living laboratory for teaching natural medicine, which promotes learning for students and visitors. Specialized, well trained and dedicated staff members are available to look after the medicinal plant garden for weeding, planting creating garden beds, and maintain plants. The living collection now contains over 500 species from different geographical location including vegetations of multiple habitats and ecosystem. The garden includes live plants from small herbaceous to vines to shrubs and trees, both natives and non natives. The detailed list of plants is given below. The garden emphasizes the importance of plant based remedies over centuries and their role in the contemporary medicine.

The Medicinal Plant Garden will continue to improve contributions to research besides expanding efforts to develop educational programs which will promote knowledge, understanding, preservation and conservation of medicinal plants for the institution, local community and surrounding areas.



Registrar
Amity University Madhya Pradesh
Gwalior

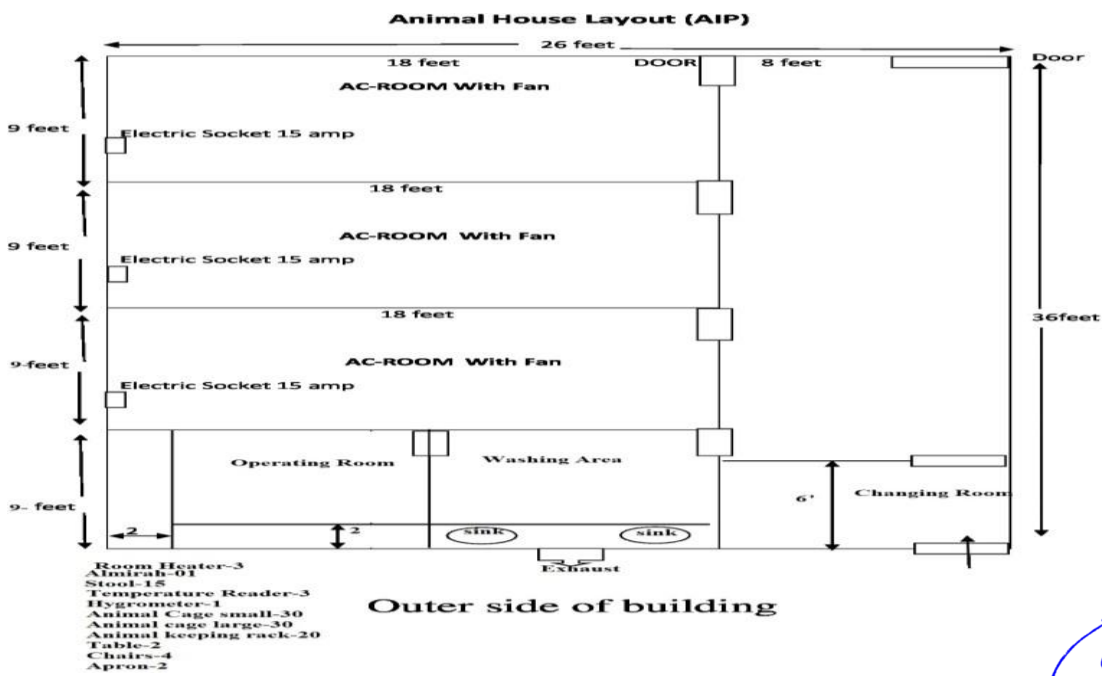
Animal House



(Establishment Year - 2020)

Animal house Amity University Madhya Pradesh, Gwalior constructed in year 2018. The animal house is present in first floor of 'C block' of University adjacent to the labs of AIP. The animal house is required to carry our preclinical research such as various Pharmacology, Toxicology and Biotechnology studies. The area of animal house is 36 X 26 ft². The animal house has two animal rooms and one procedure/experimental room, one operating room, one changing room with separate washing and cleaning, cage storage and feed storage area. The animal house has 24X7 electrical and water supply with AC facilities. The animal house is meant to use majorly by two institutes; 1. AIP; 2. AIB to perform their research/project activities. The animal house also has

Incinerator, which is fixed outside of animal house. Presently, the animal house is not functional since, B.Pharm Vth semester is running and most of the Pharmacology experiments are done by the help of the simulation software as per the directions of Pharmacy Council of India (PCI). The constitution of the institutional animal ethics committee (IAEC) is under process and soon we are applying for approval of our facility by CPCSEA. Currently we are having only B.Pharm and running fifth, third and first semester. According to PCI, practicals must be performed by the software thus there is no need to take CPCSEA registration in B.Pharm. But when the final batch will be running and also eligible for M. Pharm approval then we can apply for the CPCSEA registration. But we have already in advance constructed animal house. The layout of the animal house is shown here:



(Signature)
 Registrar
 Amity University Madhya Pradesh
 Gwalior